

Rotary Connectors

Round Flanged / Compact Flanged

■ Features: Touch panels and boxes can be freely rotated.

Round Flanged



RoHS

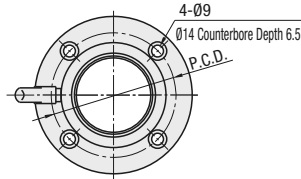
Compact Flanged



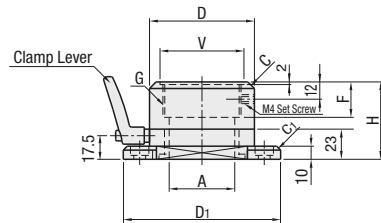
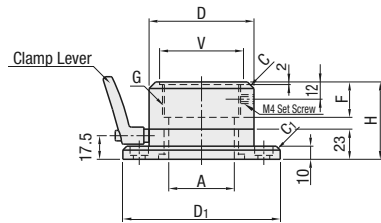
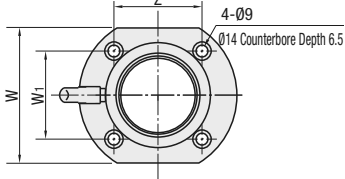
RoHS

| Type | Material | Surface Treatment | Clamp Lever | Accessory | |
|-------------------------------|------------------|----------------------------|-------------|-----------|----------|
| Round Flanged/Compact Flanged | | | | Screw | Nut |
| ROCN WROCN | EN 1.0038 Equiv. | Electroless Nickel Plating | CLMD | CB8-20x4 | LBNR8x4 |
| ROCK WROCK | EN 1.0038 Equiv. | Black Oxide | CLMD | CB8-20x4 | LBNR8x4 |
| ROC SH WROC S | EN 1.4301 Equiv. | - | CLMS | SCB8-20x4 | SLBNR8x4 |

Round Flanged



Compact Flanged



- Structure with inner stopper prevents 360 rotation to prevent wiring from being twisted.
- Avoid giving excessive impact to the internal stopper when rotating, otherwise, it may cause damages.

| Part Number | Type | Nominal | A | D | D ₁ | G (PF) | F | H | C | V | P.C.D. | C ₁ | W | W ₁ | Z | Applicable Tube | *Reference Values | |
|-------------|-----------------|---------|----|-----|----------------|--------|----|----|---|-----|--------|----------------|-----|----------------|----|-----------------|--------------------|--------------------|
| | | | | | | | | | | | | | | | | | X ₁ (N) | X ₂ (N) |
| 28 | Round Flanged | 28 | 20 | 50 | 85 | G1 | 23 | 55 | 3 | 35 | 65 | 1.5 | 52 | 34 | 56 | G28 | 16.4 | 23.5 |
| 36 | ROCN | 36 | 28 | 60 | 95 | G1 1/4 | 26 | 58 | | 45 | 75 | | 62 | 44 | 62 | G36 | 17.2 | 24.8 |
| 42 | ROCK | 42 | 33 | 65 | 100 | G1 1/2 | | | | 50 | 80 | | 67 | 49 | 64 | G42 | 18.4 | 30.3 |
| 54 | ROCSH | 54 | 48 | 80 | 120 | G2 | 27 | 59 | 5 | 64 | 95 | 3 | 82 | 64 | 72 | G54 | 19.6 | 32.3 |
| 70 | Compact Flanged | 70 | 62 | 96 | 138 | G2 1/2 | 32 | 63 | | 78 | 112 | | 98 | 76 | 82 | G70 | 20.8 | 33.4 |
| 82 | WROCN | 82 | 72 | 106 | 148 | G3 | | | | 90 | 122 | | 108 | 86 | 88 | G80 | 22 | 34.1 |
| 92 | WROCK | 92 | 85 | 118 | 160 | G3 1/2 | 37 | 68 | | 103 | 134 | | 120 | 94 | 96 | G92 | 23.2 | 36.7 |
| | WROC S | | | | | | | | | | | | | | | | | |

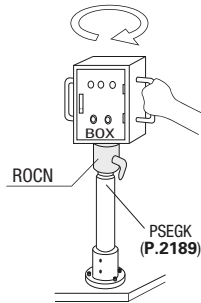
Take note that the applicable hollow tubes are based on JIS C 8305 Rigid Steel Conduits, but the thread section will be JIS B 0202 Parallel Threads for Tubes. (Threads for electrical conduits will not fit.)
 * Please note the reference values are not guaranteed.

Ordering Example Part Number **ROCN42**

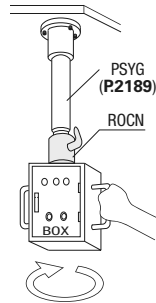


Example

App. Example 1



App. Example 2



- * Assume BOX load is 50kg.
- As shown in App. Example 1, X₁(N) is the force needed to turn the handle.
- As shown in App. Example 2, X₂(N) is the force needed to turn the handle.

| Nominal | Unit Price | | | | |
|---------|------------|------|--------|-------|-------|
| | ROCN | ROCK | ROC SH | WROCN | WROCK |
| 28 | | | | | |
| 36 | | | | | |
| 42 | | | | | |
| 54 | | | | | |
| 70 | | | | | |
| 82 | | | | | |
| 92 | | | | | |

Rotary Connectors

Moment Load Allowable - Single Flanged, Double Flanged

■ Features: Built-in oil-free bushings enable uses under moment loads.

Single Flanged



RoHS

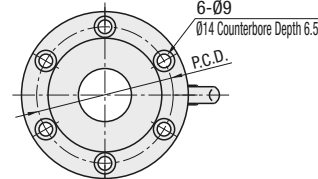
Doubled Flanged



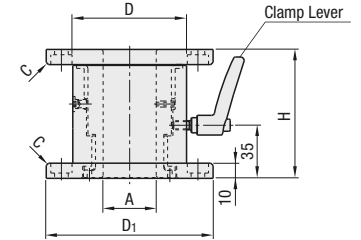
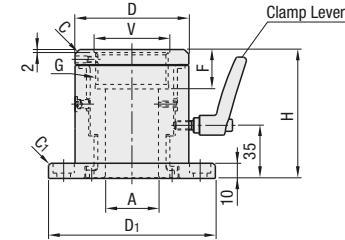
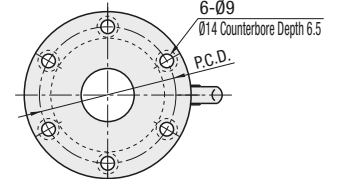
RoHS

| Type | Material | Surface Treatment | Clamp Lever | Accessory | |
|-------------------------------|------------------|----------------------------|-------------|-----------|---------|
| Single Flanged/Double Flanged | | | | Screw | Nut |
| HRCN HRCNW | EN 1.0038 Equiv. | Electroless Nickel Plating | CLMD | CB8-20x6 | LBNR8x6 |

Single Flanged (HRCN)



Doubled Flanged (HRCNW)



- Structure with inner stopper prevents 360 rotation to prevent wiring from being twisted.
- Avoid giving excessive impact to the internal stopper when rotating, otherwise, it may cause damages.

Single Flanged

| Part Number | Type | Nominal | A | D | D ₁ | G (PF) | F | H | C | V | P.C.D. | C ₁ | Applicable Tube | Allowable Moment Load (Calculated Values) N · m | Unit Price 1 ~ 4 pc(s). |
|-------------|------|---------|----|-----|----------------|--------|----|----|---|----|--------|----------------|-----------------|-------------------------------------------------|-------------------------|
| | | | | | | | | | | | | | | | |
| 42 | | 42 | 35 | 75 | 110 | G1 1/2 | 26 | 85 | 3 | 50 | 90 | 1.5 | G42 | 300 | |
| 54 | | 54 | 50 | 90 | 125 | G2 | 27 | 85 | | 64 | 105 | | G54 | 500 | |
| 70 | | 70 | 65 | 105 | 140 | G2 1/2 | 32 | 85 | | 78 | 120 | | G70 | 750 | |
| 82 | | 82 | 80 | 120 | 155 | G3 | 37 | 90 | | 92 | 135 | | G80 | 1000 | |

Take note that the applicable hollow tubes are based on JIS C 8305 Rigid Steel Conduits, but the thread section will be JIS B 0202 Parallel Threads for Tubes. (Threads for electrical conduits will not fit.)
 Allowable moment loads are not guaranteed values. For orders larger than indicated quantity, please request a quotation.

Doubled Flanged

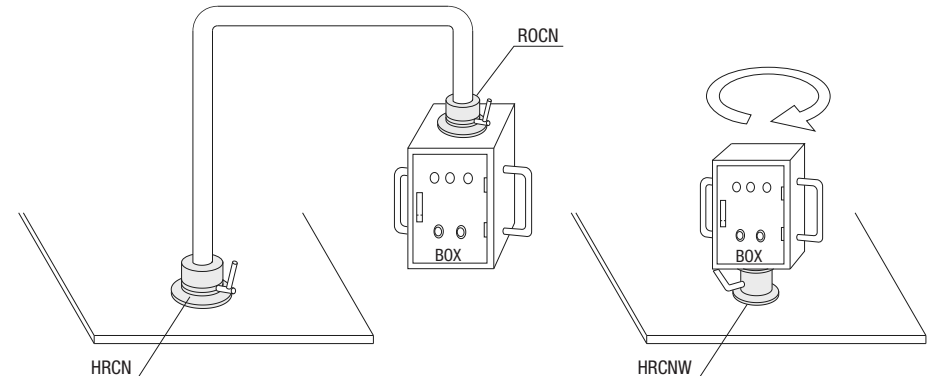
| Part Number | Type | Nominal | A | D | D ₁ | H | C | P.C.D. | Allowable Moment Load (Calculated Values) N · m | Unit Price 1 ~ 4 pc(s). |
|-------------|------|---------|----|-----|----------------|----|-----|--------|-------------------------------------------------|-------------------------|
| | | | | | | | | | | |
| 42 | | 42 | 35 | 75 | 110 | 85 | 1.5 | 90 | 300 | |
| 54 | | 54 | 50 | 90 | 125 | 85 | | 105 | 500 | |
| 70 | | 70 | 65 | 105 | 140 | 85 | | 120 | 750 | |
| 82 | | 82 | 80 | 120 | 155 | 90 | | 135 | 1000 | |

Allowable moment loads are not guaranteed values. For orders larger than indicated quantity, please request a quotation.

Ordering Example Part Number **HRCNW54**



Example



Usable under Moment Load

Box Mountable without a Hollow Stand