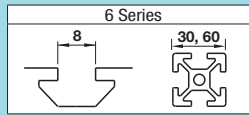


Tabbed Brackets - For 1 Slot

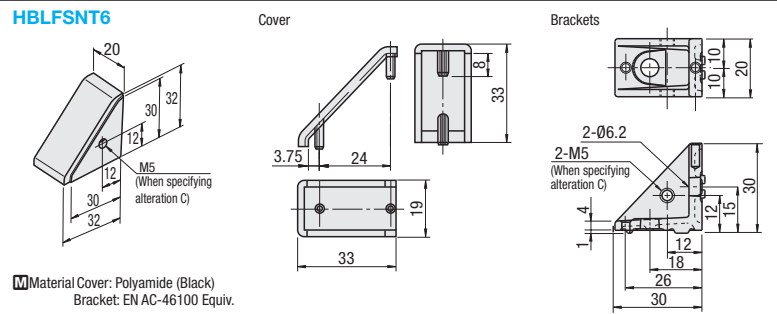
For 6 Series (Slot Width 8mm) Aluminum Extrusions



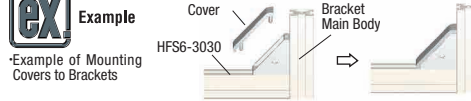
■ Features: Tabbed Reversal Brackets with Cover. Designed to prevent dust build-up.

Brackets with Cover

HBLFSNT6



Part Number	Mass (g)	Applicable Screw	T Nut	Accessory Component	Allowable Load (N)	Unit Price	Volume Discount Rate
Type	Quantity	Quantity	Quantity	Part ①	Part ②	1~99 pc(s)	100~200
HBLFSNT6	17	CBM6-12	HNTT6-6	Bracket	Cover	1176	

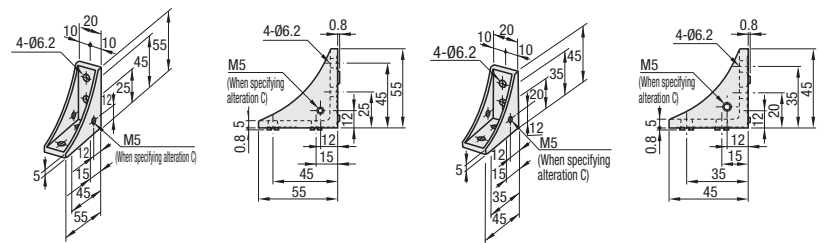


■ Features: Tabbed Reversal Brackets with two mounting holes on one side can connect extrusions more securely.

Tabbed Reversal Brackets

HBLFSSW6 HBLFSSWB6 (Black Anodize)

For 50 Sq. HBLFSSW6-50



Type	Material	Surface Treatment
HBLFSSW6	EN AC-46100	-
HBLFSSWB6	EN AC-46100	Black Anodize
HBLFSSW6-50	EN AC-46100	-

Part Number	Mass (g)	Applicable Screw	T Nut	Allowable Load (N)	Unit Price	Volume Discount Rate
Type	Quantity	Quantity	Quantity	1~99 pc(s)	100~200	
HBLFSSW6	37	CBM6-12	HNTT6-6	4	1764	
HBLFSSWB6* (Black Anodize)	37	CBM6-12	HNTT6-6	4	1764	
HBLFSSW6-50	27	CBM6-12	HNTT6-6	4	1764	

* For repairing black anodizing, refer to P846.

Ordering Example

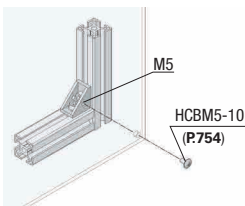
Part Number: HBLFSNT6, HBLFSSW6

Alterations Example

Part Number: HBLFSSW6 - (C, SET, SST, SEU, SSU, SEP, SSP, SEC)

Alterations	Code	Spec.	Applicable Bracket
Mounting Hole Alteration for Cover	C	Adds taps on a bracket for cover mounting. (M5 on Both Sides) (Mounting Screw HCBM on P754)	HBLFSNT6
			HBLFSSW6
			HBLFSSWB6
			HBLFSSW6-50

■ C Hole Alterations (Example of Cover Mounting)
*Specify alteration code C.

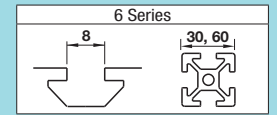


Alterations	Code	Spec.	Applicable Bracket
Applicable Screws and Nuts Set	SET SST SEU SSU SEP SSP SEC	Applicable screws and nuts for fixing the brackets on extrusions come in a set. (Adds to the bracket price.)	HBLFSNT6
		(Ex.) When HBLFSSW6 is specified:	HBLFSSW6
		Code Screw Nut	HBLFSSWB6
		SET CBM6-12 HNTT6-6	HBLFSSW6
		SST SCB6-12 HNTT6-6	HBLFSSW6
		SEU CBM6-12 HNTU6-6	HBLFSSWB6
		SSU SCB6-12 SHNTU6-6	HBLFSSWB6
		SEP CBM6-12 HNTTP6-6	HBLFSSWB6
		SSP SCB6-12 SHNTTP6-6	HBLFSSWB6
		SEC HCBST6-15 HNTT6-6	HBLFSSW6-50
			HBLFSSW6-50
			HBLFSSW6-50

⚠ Screws for black anodized brackets are HCBMTB (Trivalent Chromate Black) on P751.
⚠ Included Screw is not RoHS compliant when -SET, -SEU or -SEP other than black anodized brackets is specified.

Extruded Brackets - For 1 Slot

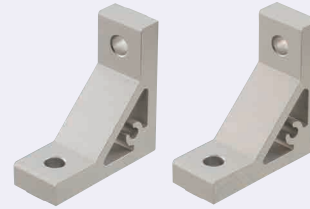
For 6 Series (Slot Width 8mm) Aluminum Extrusions



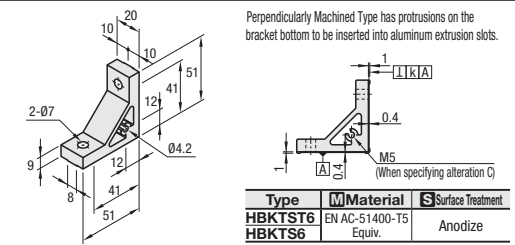
■ Features: Perpendicularly Machined Type Extruded Brackets with tabs to fit extrusions. Brackets with tabs to fit in slots of extrusions and stop rotating when tightening.

Thick Brackets (Perpendicularly Machined)

HBKTST6 HBKTS6



Part Number	Perpendicularity K
HBKTST6	0.03
HBKTS6	0.06

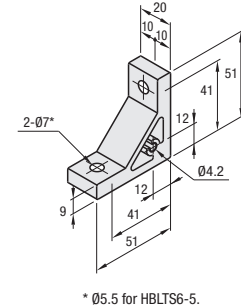


Part Number	Mass (g)	Applicable Screw	T Nut	Allowable Load (N)	Unit Price	Volume Discount Rate
Type	Quantity	Quantity	Quantity	1~99 pc(s)	100~200	
HBKTST6	44	CBM6-15	HNTT6-6	2	1176	
HBKTS6	44	CBM6-15	HNTT6-6	2	1176	

■ Features: Aluminum Extruded Brackets. Designed to prevent dust from building up with good appearance.

Thick Brackets

NBLTS6 HBLTS6 HBLTS6-5 (For M5 Screw) HBLTSB6 (Black Anodize) CHBLTS6 (Clear Coating)



⚠ Both sides and screw holes of NBLTS6 is not anodized.

Type	Material	Surface Treatment
NBLTS6	EN AW-6063-T5 Equiv.	Anodize
HBLTS6(-5)	EN AW-6063-T5 Equiv.	Black Anodize
HBLTSB6	EN AW-6063-T5 Equiv.	Clear Coating Anodize
CHBLTS6	EN AC-51400-T5 Equiv.	Clear Paint

Part Number	Mass (g)	Applicable Screw	T Nut	Allowable Load (N)	Unit Price	Volume Discount Rate
Type	Quantity	Quantity	Quantity	1~99 pc(s)	100~200	
NBLTS6	44	CBM6-15	HNTT6-6	2	1176	
HBLTS6	44	CBM5-15	HNTT6-5	2	1176	
HBLTS6-5 (For M5 Screw)	44	CBM6-15	HNTT6-6	2	1176	
HBLTSB6* (Black Anodize)	44	CBM6-15	HNTT6-6	2	1176	
CHBLTS6 (Clear Coating)	44	CBM6-15	HNTT6-6	2	1176	

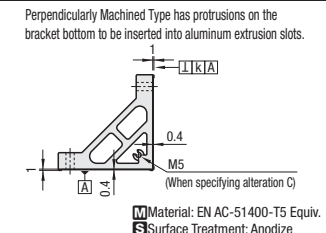
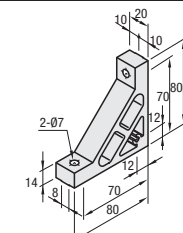
* For repairing black anodizing, refer to P846.

■ Features: Numbers of screws are the same as HBKTS6. Extrusions can be connected more securely. Perpendicularly Machined.

Ultra Thick Brackets (Perpendicularly Machined)

HBKUS6

Perpendicularity K: 0.06



Part Number	Mass (g)	Applicable Screw	T Nut	Allowable Load (N)	Unit Price	Volume Discount Rate
Type	Quantity	Quantity	Quantity	1~99 pc(s)	100~200	
HBKUS6	101	CBM6-20	HNTT6-6	2	1176	

Ordering Example

Part Number: HBLTS6

Alterations Example

Part Number: HBLTS6 - (C, SET, SST, SEU, SSU, SEP, SSP, SEC)

Alterations	Code	Spec.	Applicable Bracket
Mounting Hole Alteration for Cover	C	Adds taps on a bracket for cover mounting. (M5 on Both Sides) (Mounting Screw HCBM on P754)	HBKTS6
			NBLTS6
			HBLTS6
			HBLTS6-5
			CHBLTS6
			HBLTS6-5
			HBKUS6

Alterations	Code	Spec.	Applicable Bracket
Applicable Screws and Nuts Set	SET SST SEU SSU SEP SSP SEC	Applicable screws and nuts for fixing the brackets on extrusions come in a set. (Adds to the bracket price.)	HBKTST6
		(Ex.) When HBLTS6 is specified:	HBKTS6
		Code Screw Nut	NBLTS6
		SET CBM6-15 HNTT6-6	HBLTS6
		SST SCB6-12 HNTT6-6	HBLTS6
		SEU CBM6-15 HNTU6-6	HBLTS6
		SSU SCB6-15 SHNTU6-6	HBLTS6-5
		SEP CBM6-15 HNTTP6-6	HBLTS6
		SSP SCB6-15 SHNTTP6-6	HBLTS6-5
		SEC HCBST6-20 HNTT6-6	HBLTS6
			HBLTS6
			HBKUS6

⚠ Screws for black anodized brackets are HCBMTB (Trivalent Chromate Black) on P751.
⚠ Included Screw is not RoHS compliant when -SET, -SEU or -SEP other than black anodized brackets is specified.