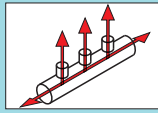


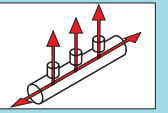
Pipe Manifolds

Socket Configurable Type



Pipe Manifolds / Sockets for Pipe Manifolds

1 Way Male Threaded Type



Type	Material		Socket		Surface Treatment
	Female Thread Socket	Male Thread Socket	Male Thread	Female Thread	
Both Ends Male Thread	SGFF	-	EN 1.0035 Equiv.	EN 1.0035 Equiv.	Trivalent Chromate
	SGFM	-	EN 1.0035 Equiv.	EN 1.1158 Equiv. (EN 1.1149 Equiv. for M5)	Electroless Nickel Plating
	SUFF	SUFFA	EN 1.4301 Equiv.	EN 1.4301 Equiv. (for M5)	-
Both Ends Female Thread	SGFMF	SGFMFA	EN 1.0035 Equiv.	EN 1.1158 Equiv. (EN 1.1149 Equiv. for M5)	Trivalent Chromate
	SUFMF	-	EN 1.4301 Equiv.	EN 1.4301 Equiv. (for M5)	-

Welding may cause small deformations that accumulate when the products are used in connected stacks.
 * Drawing for 5 Circuit Type is selected.
 Select A ~ E according to the number of holes (H). Specify from A to B when H=2, up to C when H=3, up to D when H=4 and up to E when H=5.

Applicable Fluid

Water, Air

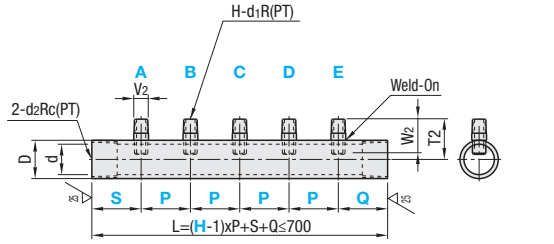
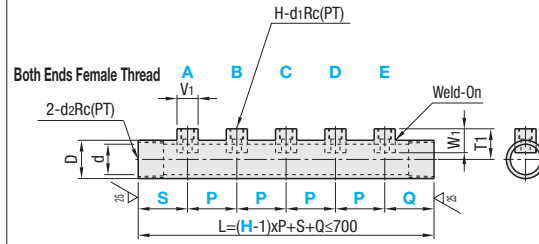
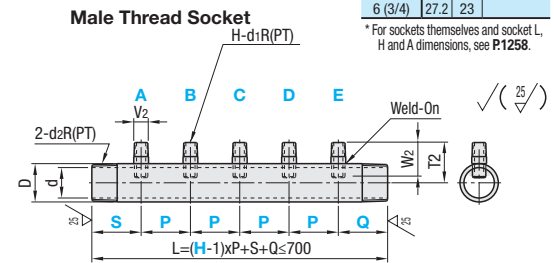
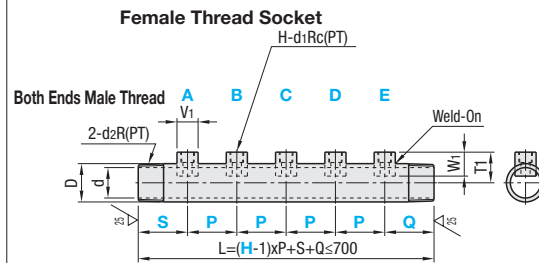
V1 and T1 Dimensions

d1 Rc(PT)	V1	W1	T1
5 (M5)	10	13.4	
1 (1/8)	15	17	
2 (1/4)	20	22	
3 (3/8)	25	24	
4 (1/2)	30	28	
6 (3/4)	35	31	

V2 and T2 Dimensions

d1 R(PT)	V2	W2	T2
5 (M5)	6	7.5	
1 (1/8)	10.5	10	
2 (1/4)	13.8	15	
3 (3/8)	17.3	17	
4 (1/2)	21.7	20	
6 (3/4)	27.2	23	

Thread: JIS B0203 R(PT)
 (Max. Operating Pressure: 0.7MPa=7kgf/cm² or less)
 * For sockets themselves and socket L, H and A dimensions, see P1258.



Part Number Type	No.	H (Number of Holes)	P, S, Q 1mm Increment	Rc (PT), R (PT), M (Coarse) Selection A, B, C, D, E					d2 R(PT)	D	d	
				A	B	C	D	E			Material: EN 1.0035 Equiv.	Material: Stainless Steel
Both Ends Male Thread	15A	2	35~150	0 (No Hole)	5 (M5)	1 (1/8)			1/2	21.7	16.1	16.1
	20A	3	35~150	0 (No Hole)	5 (M5)	1 (1/8)	2 (1/4)		3/4	27.2	21.6	21.4
	25A	4	40~150	0 (No Hole)	1 (1/8)	2 (1/4)	3 (3/8)		1	34	27.6	27.2
	32A	5	50~150	0 (No Hole)	2 (1/4)	3 (3/8)	4 (1/2)		1 1/4	42.7	35.7	35.5
	40A	5	60~150	0 (No Hole)	3 (3/8)	4 (1/2)	6 (3/4)		1 1/2	48.6	41.6	41.2
Both Ends Female Thread	15A	2	35 (45)~150	0 (No Hole)	5 (M5)	1 (1/8)			1/2	21.7	16.1	16.1
	20A	3	35 (45)~150	0 (No Hole)	5 (M5)	1 (1/8)	2 (1/4)		3/4	27.2	21.6	21.4
	25A	4	40 (50)~150	0 (No Hole)	1 (1/8)	2 (1/4)	3 (3/8)		1	34	27.6	27.2
	32A	5	50 (60)~150	0 (No Hole)	2 (1/4)	3 (3/8)	4 (1/2)		1 1/4	42.7	35.7	35.5
	40A	5	60 (70)~150	0 (No Hole)	3 (3/8)	4 (1/2)	6 (3/4)		1 1/2	48.6	41.6	41.2

Specify P, S and Q within the range of L=(H-1)xP+S+Q<=700. For Both Ends Female Thread Type, the minimum configurable values for S and Q are in ().
 For A to E, specify 0, 1, 2, 3, 4, 5 or 6 indicated before (). When selecting 0, the pitch remains unchanged and the distance between sockets is 2xP.
 All sockets of Female Thread Socket Type are female threaded, and all sockets of Male Thread Socket Type are male threaded. For ordering, see the Ordering Example and Minimum Pitch Chart below.

Ordering Example: Part Number - H (Number of Holes) - P - S - Q - A - B - C - D - E
 SUFF25A - 3 - P50 - S50 - Q50 - A3 - B2 - C2 For 3 Circuit
 SGFMF25A - 5 - P50 - S50 - Q50 - A3 - B2 - C3 - D2 - E3 For 5 Circuit
 SGFMF25A - 4 - P50 - S50 - Q50 - A3 - B2 - C0 - D2 When the number of circuits is 4 and the C port is not needed. (Number of sockets is 3)

Select A ~ E according to the number of holes (H). Specify from A to B when H=2, up to C when H=3, up to D when H=4 and up to E when H=5.

Socket Pitch (P) Minimum Pitch Chart

Size	M5	1/8	1/4	3/8	1/2	3/4
M5	35	35	35	38	40	43
1/8	35	35	38	40	43	45
1/4	35	38	40	43	45	48
3/8	38	40	43	45	48	50
1/2	40	43	45	48	50	53
3/4	43	45	48	50	53	55

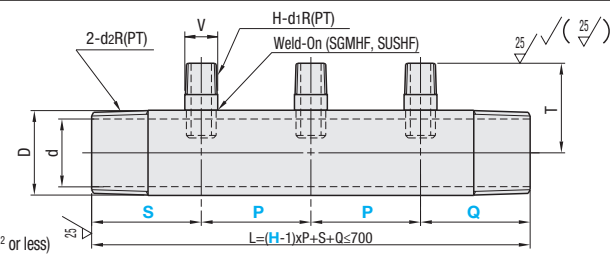
Specify a pitch larger than above values.

No.	Unit Price							
	Female Thread Socket / Male Thread Socket				Body Material: EN 1.0035 Equiv. / Body Material: EN 1.4301 Equiv.			
	H2	H3	H4	H5	H2	H3	H4	H5
15A								
20A								
25A								
32A								
40A								



Type	Material	Surface Treatment
SGMHF	EN 1.0035 Equiv.	Trivalent Chromate
SUSHF	EN 1.4301 Equiv.	-

Welding may cause small deformations that accumulate when the products are used in connected stacks.
 * Drawing for 3 Circuit Type is selected.
 Thread: JIS B0203 R(PT)
 (Max. Operating Pressure: 0.7MPa=7kgf/cm² or less)



Part Number Type	No.	H (Number of Holes)	P, S, Q 1mm Increment	d1 R(PT)	d2 R(PT)	D	Unit Price										
							SGMHF			SUSHF							
							H2	H3	H4	H5	H6	H2	H3	H4	H5	H6	
SGMHF SUSHF	15A	2	40~150	1/8	1/2	21.7	16.1	16.1									
	20A	3	40~150	1/4	3/4	27.2	21.6	21.4									
	25A	4	45~150	3/8	1	34	27.6	27.2									
	32A	5	55~150	1/2	1 1/4	42.7	35.7	35.5									
	40A	6	65~150	3/4	1 1/2	48.6	41.6	41.2									

Ordering Example: Part Number - H (Number of Holes) - P - S - Q
 SUSHF32A - 4 - P70 - S60 - Q70

Applicable Fluid

Water, Air

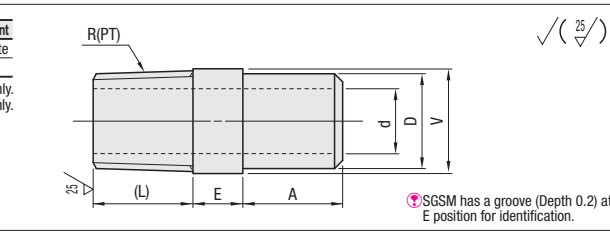
V and T Dimensions

d1 R(PT)	V	T
1 (1/8)	10.5	25.8
2 (1/4)	13.8	34.6
3 (3/8)	17.3	40.0
4 (1/2)	21.7	48.3
6 (3/4)	27.2	55.3



Type	Material	Surface Treatment
SGSM	EN 1.0035 Equiv.*	Trivalent Chromate
SUSM	EN 1.4301 Equiv.*	-

* EN 1.1149 Equiv. (SGSM) for M5 only.
 EN 1.4301 Equiv. (SUSM) for M5 only.
 Thread: JIS B0203 R(PT)



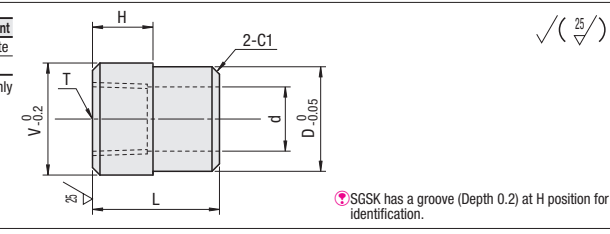
Part Number Type	No.	R(PT)	E	A	V	d		D	(L)	SGSM		SUSM	
						Unit Price 1~9 pc(s).	Volume Discount Rate 10~19			Unit Price 1~9 pc(s).	Volume Discount Rate 10~19		
SGSM SUSM	5	M5	4	5.9	6	1.5	1.5	5	7.5				
	1	1/8	5	10	10.5	6.5	5.7	9.5	10				
	2	1/4	6	11	13.8	9.2	7.8	12.8	15				
	3	3/8	6	12	17.3	12.7	10.9	16.3	17				
	4	1/2	7	13	21.7	16.1	16.1	20.7	20				
	6	3/4	8	13.5	27.2	21.6	21.4	26.2	23				

* For orders larger than indicated quantity, please check with WOS.



Type	Material	Surface Treatment
SGSK	EN 1.1158 Equiv.*	Trivalent Chromate
SUSK	EN 1.4301 Equiv.*	-

* EN 1.1149 Equiv. for M5 only.
 Thread: JIS B0203 R(PT)



* SGSK has a groove (Depth 0.2) at H position for identification.

Part Number Type	No.	T Rc(PT)	V	L	D	d		H	SGSK		SUSK	
						Unit Price 1~9 pc(s).	Volume Discount Rate 10~19		Unit Price 1~9 pc(s).	Volume Discount Rate 10~19		
SGSK SUSK	5	M5	10	13.4	9	4.3	4.3	7.5				
	1	1/8	15	17	14	8.6	8.6	8.1				
	2	1/4	20	22	19	11.4	11.4	11.4				
	3	3/8	25	24	24	14.9	12.4	12				
	4	1/2	30	28	29	16.3	16.3	15.6				
	6	3/4	35	31	34	21	21	17.7				

* Features: Welded Sockets used for Pipe Manifolds. Installation is made easy with a step provided on the outer circumference. * For orders larger than indicated quantity, please check with WOS.

Ordering Example: Part Number
 SGSM3
 SGSK2